



O'CONNELL & ASSOCIATES

CONSULTING ENGINEERS



O'Connell & Associates Consulting Engineers, LLC is a mid-sized, multi-disciplined firm specializing in residential, commercial and municipal work with civil and structural engineers on staff. Our principals and engineers all have strong design and construction backgrounds which, when combined with our experience in a wide variety of processes, techniques and materials, ensures common sense, economical solutions. In addition to our complete array of design engineering services, we also perform forensic inspections, permit acquisition, construction management and litigation support.

At O'Connell & Associates, we strive to provide a high level of personalized service through superior communication and to develop cost-efficient designs tailored to meet your project goals in a timely manner.

We are a locally owned and operated, full-service consulting engineering firm with two offices located in Santa Rosa Beach and Destin, Florida. Licensed in 12 states from Texas to Maryland and Washington D.C., our firm is available to service the vast market of the southeastern United States, specializing in engineering design criteria unique to coastal communities located along the Gulf of Mexico and Atlantic Ocean.



MEET THE TEAM



NEILL O'CONNELL, P.E.

PRESIDENT

Mr. O'Connell has been practicing civil and structural engineering design and construction since his graduation from the University of Alabama in 1999. His civil design experience includes the design of residential and commercial stormwater management systems, roadways, municipal water and sewer utilities, planning, permitting and construction. His structural experience includes the design of low, mid- and high-rise structures utilizing a wide variety of construction materials and the forensic analysis of critical building components associated with existing buildings.



MICHAEL EKBLAD, P.L.A.

DIRECTOR OF OPERATIONS / SENIOR LANDSCAPE ARCHITECT

Mr. Ekblad has a degree in Landscape Architecture from Louisiana State University and is a registered professional with the states of Florida (LA#6667058) and Tennessee (#1352). His landscape design experience includes site planning, residential, commercial, industrial, medical, streetscapes, and hospitality designs. Mr. Ekblad is also proficient in developing corporate processes, contract administration, project management, and project scheduling. He has a proven knowledge of design principles for land development projects and analytical and problem-solving skills to assess organizational issues.



JONATHAN NASH, P.E.

CIVIL ENGINEERING MANAGER

Mr. Nash has been practicing in the fields of civil engineering design, land development and construction since before his graduation from college in 2001. His civil design experience includes: residential, commercial and industrial site design including planning, roadways, streetscapes, stormwater management systems, utilities and permitting, municipal water/sewer utilities and treatment facilities including planning, conceptual design, state and federal funding assistance, design reports, bid documents, construction contract administration and project management.

MEET THE TEAM



JOSH BARKER, M.S.C.E., P.E.

SENIOR STRUCTURAL ENGINEER

Mr. Barker has a bachelors degree in civil engineering and a masters degree in structural engineering, both from the University of Alabama. His structural experience includes the detailed design of low, mid and high-rise buildings and other structures utilizing structural steel, aluminum, concrete, masonry, light gage metal, timber and engineered wood products using finite element analysis. Josh also has experience in the structural assessment, renovation and expansion of existing buildings, the forensic analysis of distressed critical building components and detailed foundation design which includes timber, precast and auger-cast pilings, shallow foundation systems such as strip footings, spread footing pads and continuous mat slabs.



BRANDI RYLES-WALLER, A.A., C.A.M.

SENIOR PROJECT MANAGER - WATERPROOFING & RESTORATION

Mrs. Ryles-Waller has been involved with condominium and homeowner associations since becoming a Licensed Community Association Manager in 2005. Her association management experience helped her obtain working knowledge of building systems and allowed her the opportunity to oversee the development and implementation of management tools including building envelope reports, building maintenance plans, and reserve studies. Her multiple building refurbishment project experience sharpened her attention to detail, strengthened communication between owners and contractors, and helped her develop commercial construction knowledge.



CALEB ALEXANDER, B.S., C.M.I.T.

SENIOR PROJECT MANAGER - CONTRACT ADMINISTRATION

Prior to graduating from the University of West Florida in the Spring of 2017, Mr. Alexander spent several years working in residential construction. His early experience working for a building contractor included interpreting design drawings and implementing the design through daily construction activities. Caleb also worked for Orange Theory Fitness in Destin, Florida, acting as the owner's representative during the new construction projects, during which time he obtained valuable knowledge in coordination for various schedules, conducting inspections, and reviewing construction documents.

CIVIL TEAM



JONATHAN NASH, P.E.
CIVIL ENGINEERING MANAGER



NEILL O'CONNELL, P.E.
PRESIDENT



BRICE NIST, P.E.
SENIOR CIVIL ENGINEER



BRENT LOWELL, E.I.T.
CIVIL PROJECT ENGINEER



ALEX LONDON, B.S.C.E.
CIVIL PROJECT ENGINEER



ANSLEY WILLIAMS, B.S.C.E.
PERMITS MANAGER



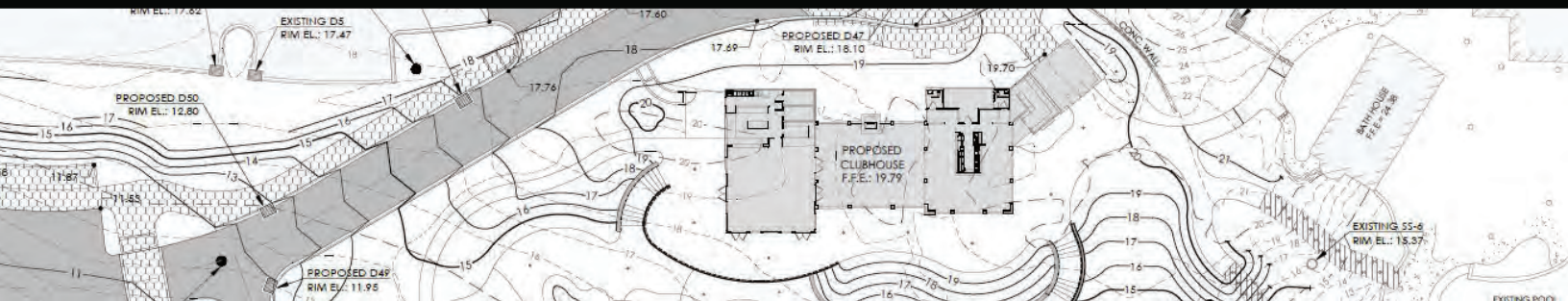
DONALD PRITT
ENGINEERING DESIGN TECHNICIAN



MICHAEL EKBLAD, P.L.A.
DIRECTOR OF OPERATIONS / SENIOR
LANDSCAPE ARCHITECT



MELODY MCPHERSON
OPERATIONS MANAGER



STRUCTURAL TEAM



JOSH BARKER, M.S.C.E., P.E.
SENIOR STRUCTURAL ENGINEER



NEILL O'CONNELL, P.E.
PRESIDENT



**TYSON SANDERS,
B.S.C.E., E.I.T**
STRUCTURAL PROJECT ENGINEER



**MATTHEW SPENCE,
B.S.C.E., E.I.T**
STRUCTURAL PROJECT ENGINEER



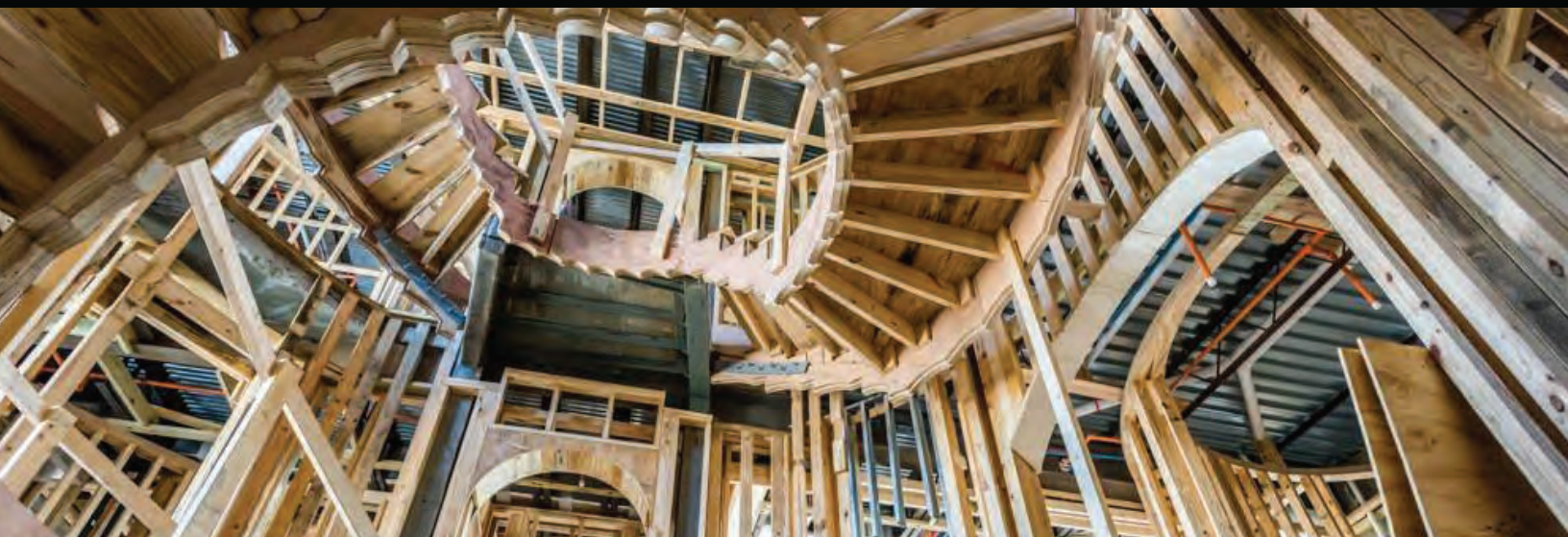
**BJ BRYANT, B.S.M.E.,
C.G.C., C.P.R.C.**
SENIOR PROJECT MANAGER / INSPECTOR



MICHAEL EKBLAD, P.L.A.
DIRECTOR OF OPERATIONS / SENIOR
LANDSCAPE ARCHITECT



MELODY MCPHERSON
OPERATIONS MANAGER



WATERPROOFING AND RESTORATION TEAM



BRANDI RYLES-WALLER,
A.A., C.A.M.
SENIOR PROJECT MANAGER



NEILL O'CONNELL, P.E.
PRESIDENT



MORGAN FEAGIN,
M.S.C.E., M.B.A., P.E.
PROJECT ENGINEER



LAUREN BARNES, E.I.T.
PROJECT ENGINEER



STEPHANIE HURLEY, A.A.
OFFICE ADMINISTRATOR



MICHAEL EKBLAD, P.L.A.
DIRECTOR OF OPERATIONS / SENIOR
LANDSCAPE ARCHITECT



MELODY MCPHERSON
OPERATIONS MANAGER



CONTRACT ADMINISTRATION TEAM



CALEB ALEXANDER,
B.S., C.M.I.T.
SENIOR PROJECT MANAGER



NEILL O'CONNELL, P.E.
PRESIDENT



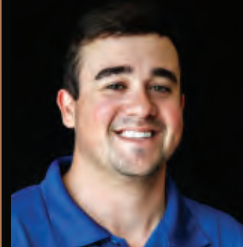
TYLER CARNLEY,
B.S.B.C.
PROJECT MANAGER



BJ BRYANT, B.S.M.E.,
C.G.C., C.P.R.C.
SENIOR PROJECT MANAGER / INSPECTOR



DJ PORTER
PROJECT MANAGER



LANDON GUNTER
PROJECT MANAGER



STEPHANIE HURLEY, A.A.
OFFICE ADMINISTRATOR



ALEXANDER CARROLL
PROJECT MANAGER

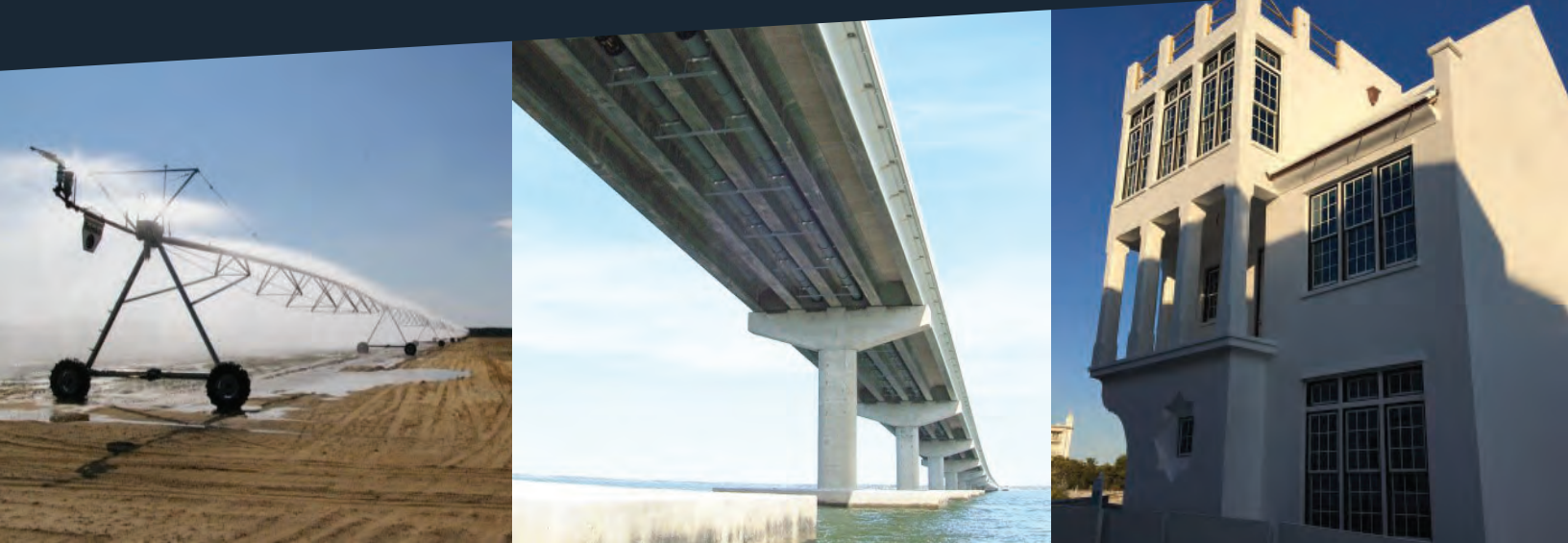


MICHAEL EKBLAD, P.L.A.
DIRECTOR OF OPERATIONS / SENIOR
LANDSCAPE ARCHITECT



MELODY MCPHERSON
OPERATIONS MANAGER

CIVIL ENGINEERING PROJECTS



O'Connell & Associates' Civil Engineering design team works with each client to develop conceptual and detailed residential, commercial, and municipal designs. Projects may include planning, permitting and development of site grading and drainage, roadway design, small and large-scale stormwater retention, pumping station design, potable water wells, storage and distribution systems, wastewater collection and treatment systems, reuse water handling and disposal. During the design our team will coordinate closely with planning and regulatory authorities to establish a well-defined roadmap to help lead the project team through complex review and approval processes.

CIVIL ENGINEERING SERVICES INCLUDE:

- CAD Drafting
- Construction Administration
- Flood Zone Certification
- Forensic Analysis
- Grading and Drainage
- Production Water Wells
- Potable Water Treatment
- Permitting
- Traffic Studies
- Utility Relocation
- Pumping Systems
- Retaining Walls
- Specification Writing
- Wastewater Treatment
- Residential and Commercial Development
- Potable Water Storage and Distribution Systems
- Reuse Water Distribution/Disposal
- Road and Bridge Design and Analysis
- Wastewater Collection Systems
- Stormwater Design and Analysis

Some of our civil engineering projects include Regional Utilities' Wolfe Creek Reclaimed Water Spray Field and Residuals Management Facility, the US Hwy 331 Bridge Twin Pipeline, the WaterSound Beach Club expansion, the Camp Creek Golf Course Resort, St. Joe Sportsman's Club, WaterColor Crossings commercial development and numerous other commercial and single/multifamily residential development projects.



STRUCTURAL PROJECTS



O'Connell & Associates' Structural Engineering design team works with each client to develop conceptual and detailed residential, commercial and municipal designs, custom tailored to meet their needs. We employ state of the art engineering computer software capable of performing three-dimensional and finite element analysis when necessary. We also use engineering computer software to aid in the design of concrete slabs, foundations, walls, floors, roofs, bridges, steel, aluminum, and wood frames, stair towers, mechanical platforms, retaining walls and other miscellaneous structural connections.

STRUCTURAL ENGINEERING SERVICES INCLUDE:

- 3D Modeling
- Aluminum Design
- Building Code Analysis
- CAD Drafting
- Concrete Design
- Specification Writing
- Steel Design
- Retaining Walls
- Masonry Design
- Wood Design
- Forensic Analysis
- Inspection Reports
- Value Engineering
- Construction Management
- Contract Administration
- Parking Deck Design and Analysis
- Produce Structural Contract Documents for Building Permits
- Residential, Commercial & Municipal Design
- Door & Window Wind Pressure Certification

Some of our structural engineering projects include above and below ground pump stations, tanks and access platforms, the commercial design of multi-story restaurants, apartments, condominiums and shopping centers, and numerous other single and multifamily residential design projects in Texas, Louisiana, Mississippi, Alabama, Florida, Georgia, Tennessee, South Carolina, North Carolina, Virginia, Maryland, Michigan, and Washington, D.C.



WATERPROOFING AND RESTORATION PROJECTS



O'Connell & Associates' Waterproofing and Restoration team works with residential and commercial property managers and directors to identify and address building leakage problems, locate and determine causes of structural and non-structural component failures, analyze and report on waterproofing systems and provide recommendations for remedial designs.

WATERPROOFING AND RESTORATION ENGINEERING SERVICES INCLUDE:

- Building Envelope Condition Surveys
- Turnover Inspections & Reports
- Balcony / Railing Inspections & Certifications
- Leak Detection & Infrared Inspections
- Wind Mitigation Inspections
- Milestone Inspections
- Legal Support
- Forensic Analysis
- Reserve & Structural Integrity Reserve Studies
- Damage Assessments
- Continuing Engineering Service
(3 year partnership program)
- Development of Construction
- Documents for Restoration:
 - CAD drawings
 - Concrete Repairs
 - Cladding Repairs
 - Painting & Waterproofing
 - Scope & Specification Writing
 - Window & Door Replacement

Let our team help maintain your property with our comprehensive suite of services, ranging from condition surveys and leak investigations to State mandated inspections including milestone inspections and in-depth Structural Integrity Reserve Studies. Stay ahead of the curve and ensure your investments are safeguarded with our expert guidance and actionable insights. We also work to develop detailed specifications and scope of work for repairs, solicit and tabulate competitive bids from qualified general contractors when the need arises. The waterproofing and restoration team also works with our clients and our Contract Administration team to provide detailed inspection services during restoration projects to ensure a properly completed project and to continuously communicate with our clients. From start to finish our dedicated team will work with you to ensure your project is completed to your highest expectations.



CONSTRUCTION ADMINISTRATION PROJECTS



O'Connell & Associates' Contract Administration team has completed numerous structural and building envelope restoration projects including: the Emerald Towers West Condominium, the building envelope restoration at the Tides at Tops'l Condominium, the building envelope and structural restoration at the Emerald Isle Club, railing, cladding and waterproofing restoration at Island Echos Condominium, and sealant and waterproofing restoration at Elation at Baytowne Wharf and Bahia at Baytowne Wharf Condominiums.

From forensic investigations and exterior building inspections to leak testing and substantial completion punchlist creation, our contract administration team can help you find solutions to your building's problems and work with you and the contractor to correct them in a timely and efficient manner.



O'CONNELL & ASSOCIATES

CONSULTING ENGINEERS

By hiring O'Connell & Associates, you will be choosing a team of experienced, registered professional engineers – with experience in a wide variety of materials, design techniques and civil, and structural systems. We will select the most efficient design and adapt it to meet your project's specific requirements. Our practical, deadline-oriented professionals strive to effectively communicate project goals and work diligently to meet submission deadlines, which in turn helps minimize delays associated with permitting and construction. We take pride in our projects and our clients. We strive to provide a personalized, yet professional service to our clientele that is of the utmost satisfaction no matter how big or small the project.





CONTACT

www.oconnellengineers.com

(850) 403-4555

Engineer@oconnellengineers.com

OFFICE HOURS OF OPERATION

8:00 AM – 5:00 PM

Monday – Friday

ADDRESSES

THE SHOPS OF GRAYTON NORTH
1394 COUNTY HIGHWAY 283 S. | BUILDING #3
GRAYTON BEACH, FL 32459

THE COMMONS AT CRYSTAL BEACH
4635 GULFSTARR DR | UNIT 120
DESTIN, FL 32541